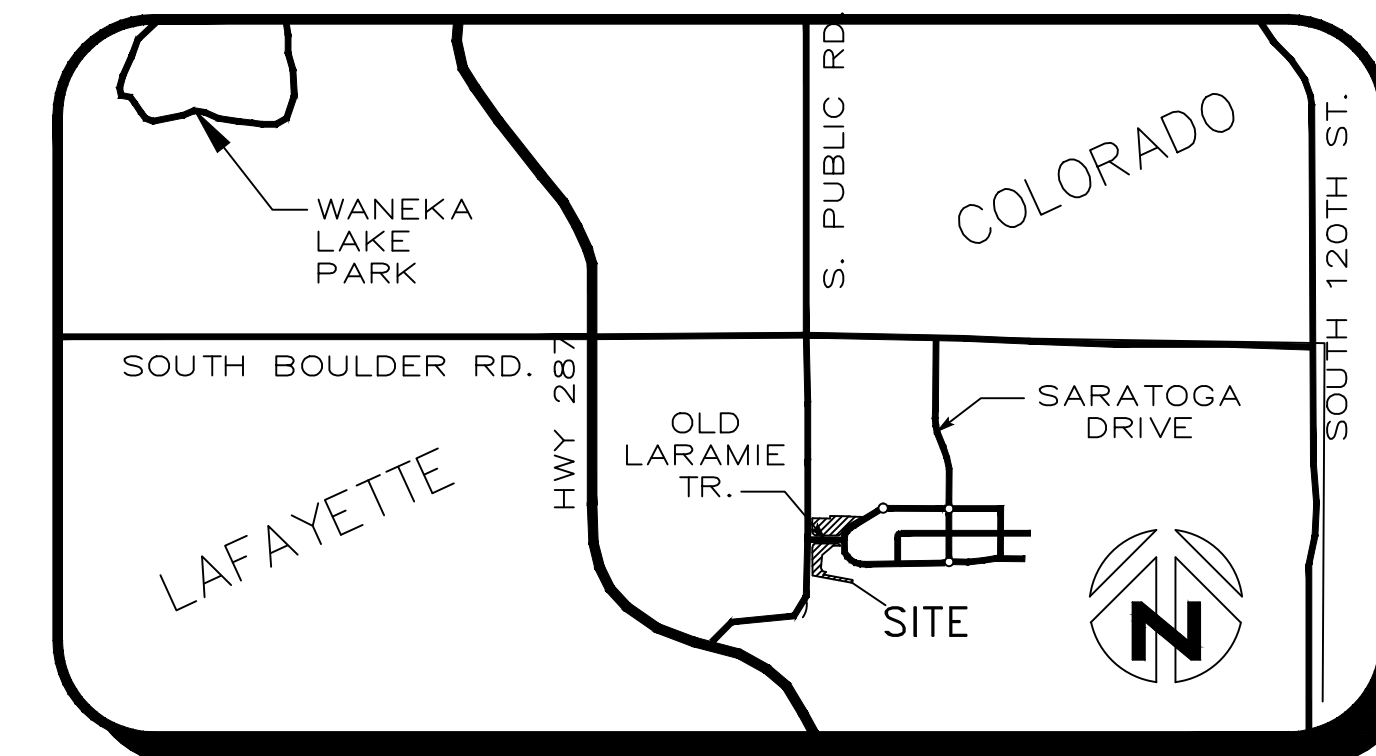


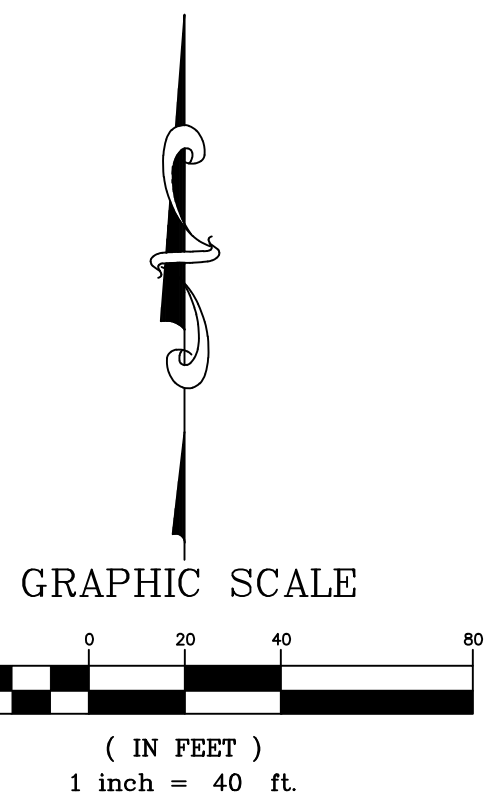
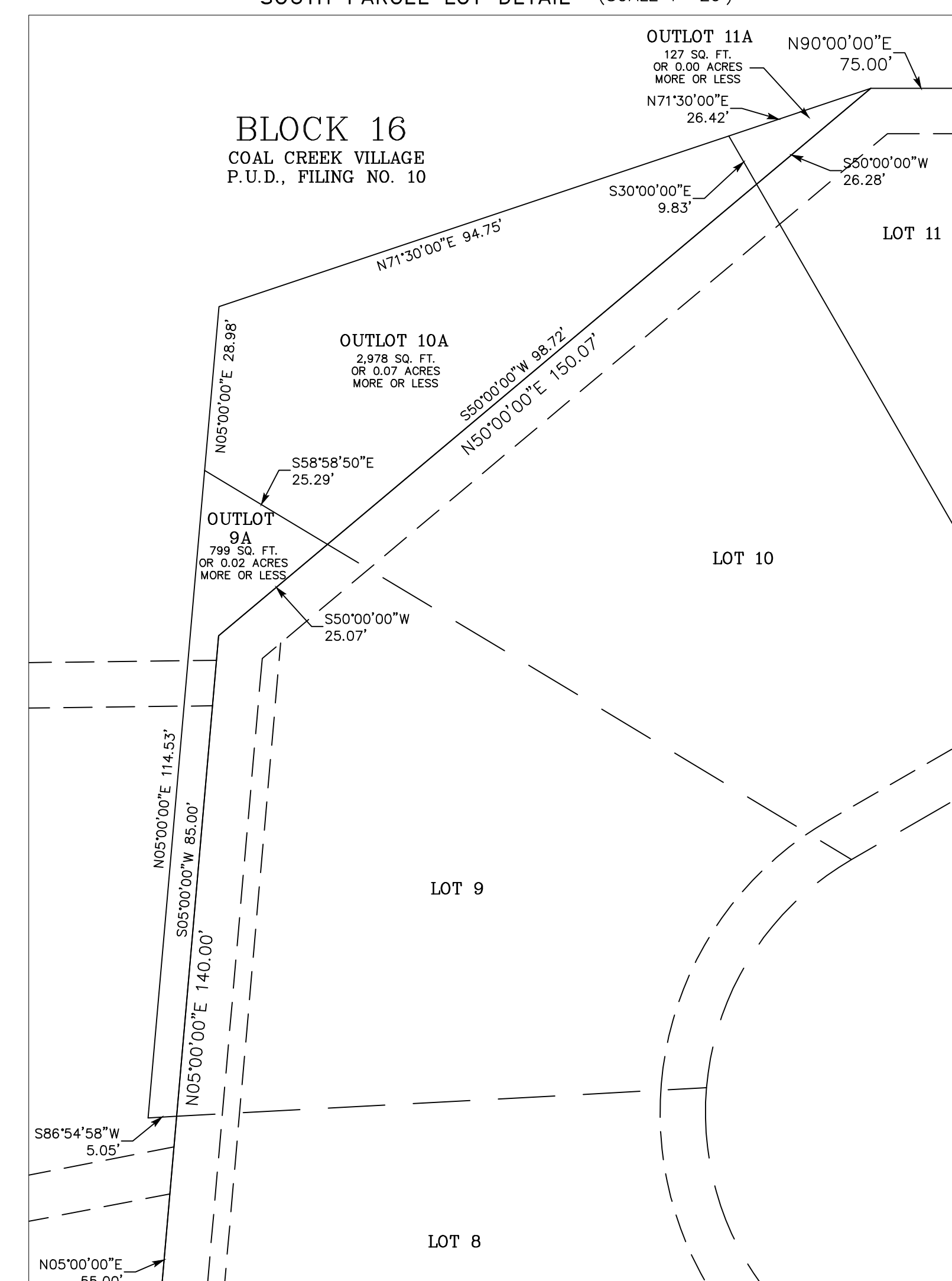
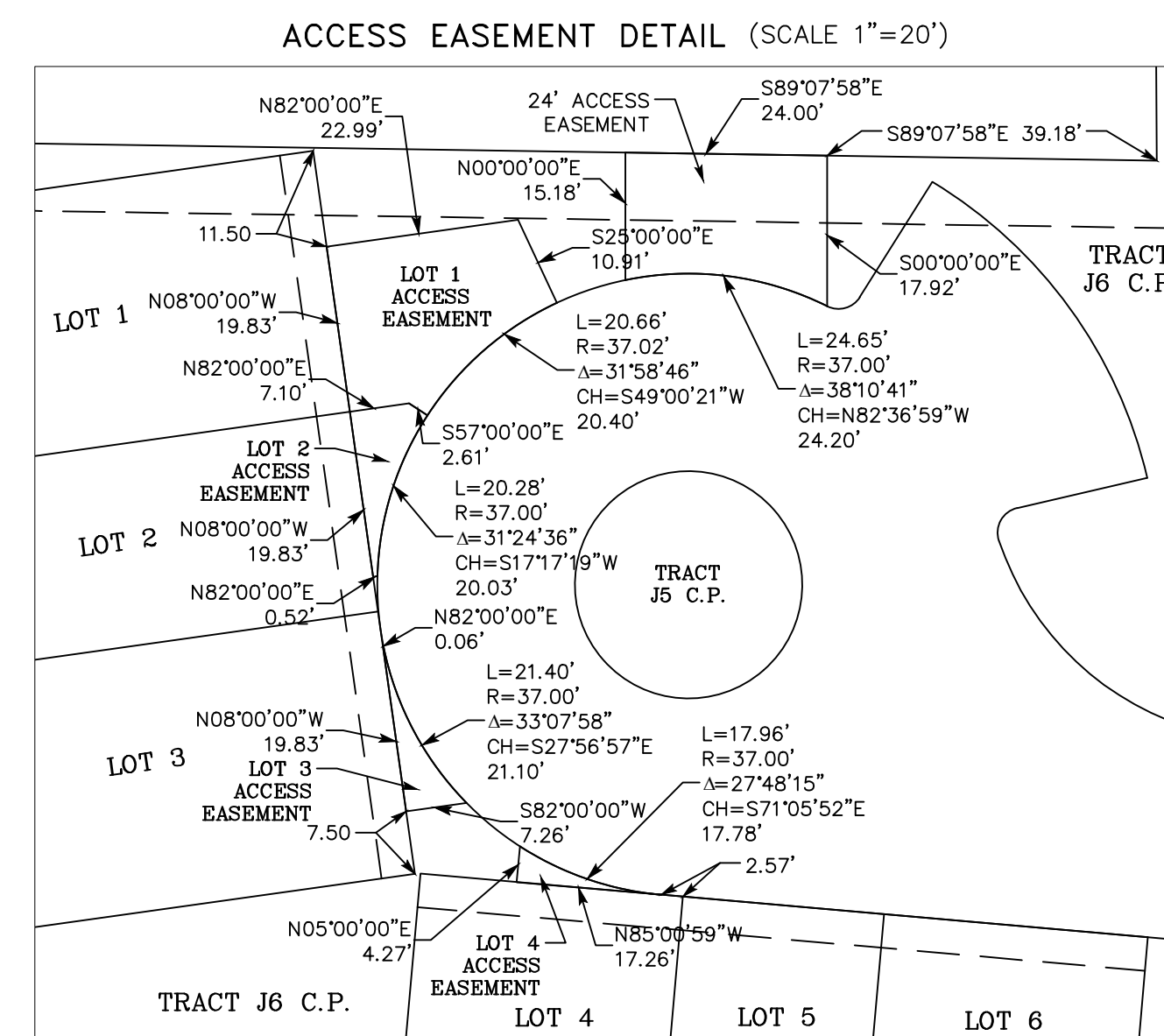
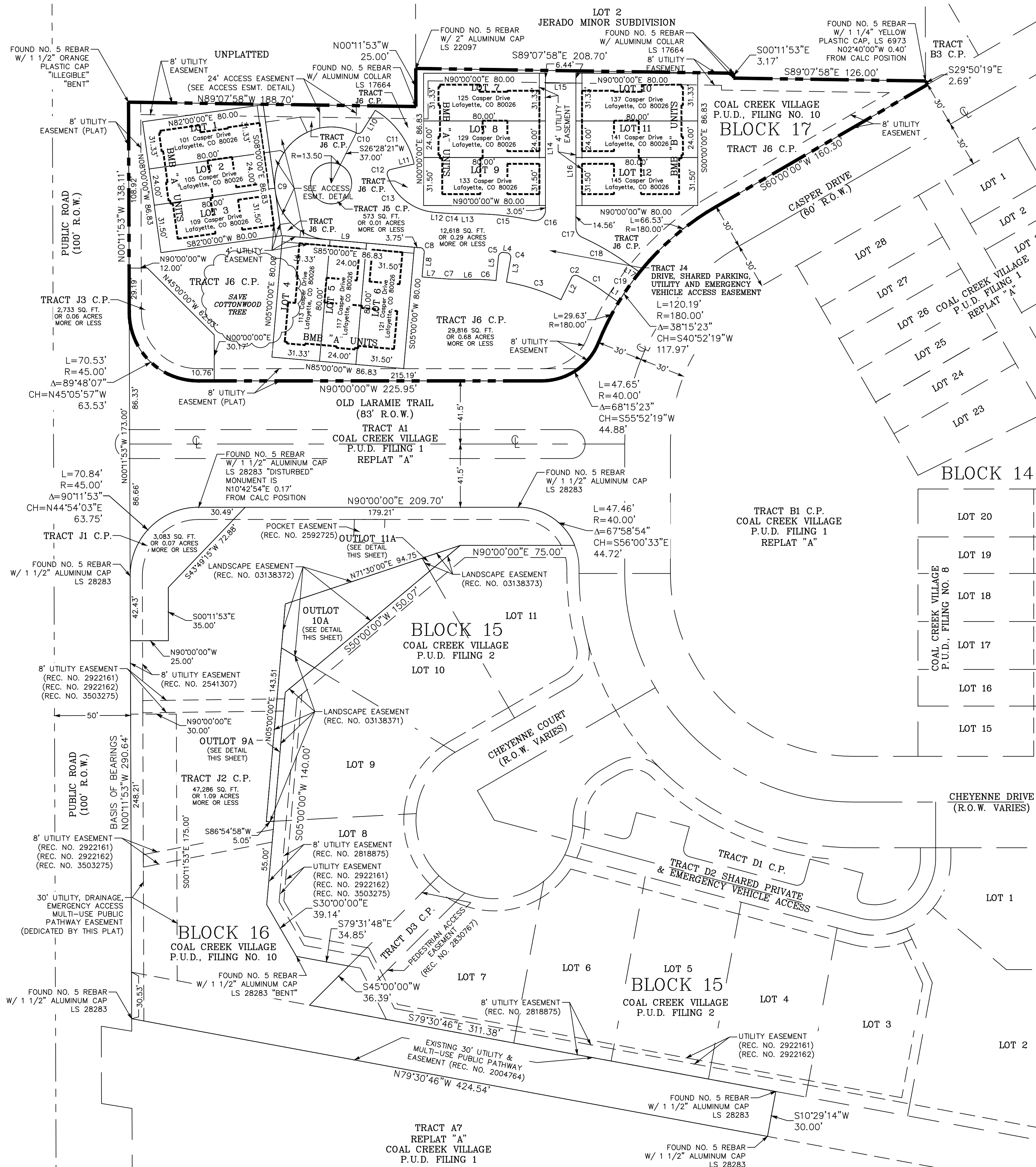
ADDRESS & TOWNHOMES CONFIGURATION MAP

BLOCK 17 ~ COAL CREEK VILLAGE P.U.D., FILING NO. 10
 A REPLAT OF TRACT 1, COAL CREEK VILLAGE P.U.D. FILING 1 REPLAT "A" & TRACT 4A, COAL CREEK VILLAGE P.U.D. FILING 2, LOCATED IN THE NORTHWEST QUARTER OF SECTION 11, TOWNSHIP 1 SOUTH, RANGE 69 WEST OF THE 6TH P.M., CITY OF LAFAYETTE, COUNTY OF BOULDER, STATE OF COLORADO.



LINE #	LENGTH	DIRECTION
L1	12.49	N55°00'00"W
L2	15.95	S25°53'25"W
L3	15.95	N10°01'14"E
L4	2.08	N81°57'47"W
L5	15.95	S06°03'12"W
L6	7.34	N90°00'00"W
L7	10.00	N85°00'00"W
L8	16.00	N05°00'00"E
L9	61.82	N85°00'00"W
L10	16.19	N32°12'42"E
L11	15.83	S76°53'17"W
L12	5.54	S85°00'00"E
L13	7.34	N90°00'00"E
L14	83.45	N00°00'00"E
L15	20.00	N90°00'00"E
L16	94.95	N00°00'00"E
L17	12.49	S55°00'00"E

CURVE #	LENGTH	RADIUS	DELTA	CHORD DIRECTION	CHORD LENGTH
C1	19.45	148.00	7°31'44"	N58°45'52"W	19.43
C2	4.80	3.00	91°34'51"	S71°40'51"W	4.30
C3	37.73	129.00	16°45'29"	N72°02'40"W	37.60
C4	4.80	3.00	91°34'51"	N35°46'11"W	4.30
C5	4.80	3.00	91°34'51"	S51°50'37"W	4.30
C6	14.63	129.00	6°29'51"	N86°45'05"W	14.62
C7	16.67	191.00	5°00'00"	N87°30'00"W	16.66
C8	4.71	3.00	90°00'00"	N40°00'00"W	4.24
C9	130.11	37.00	201°28'21"	N15°44'11"E	72.70
C10	4.41	3.00	84°15'39"	N74°20'32"E	4.02
C11	44.67	56.00	45°41'58"	S35°57'42"E	43.49
C12	5.01	3.00	95°46'41"	S28°59'56"W	4.45
C13	41.54	36.00	66°06'36"	S51°56'42"E	39.27
C14	12.92	148.00	5°00'00"	S87°30'00"E	12.91
C15	38.84	172.00	12°56'15"	S83°31'53"E	38.76
C16	12.58	7.00	102°56'15"	N51°28'07"E	10.95
C17	8.01	7.00	65°33'15"	S32°46'38"E	7.58
C18	31.68	172.00	10°33'15"	S60°16'38"E	31.64
C19	24.02	180.00	7°38'42"	S34°59'56"W	24.00



Sorenson Engineering, Inc.
 Patric N Sorenson PE
 Email: pat@sorensonengineering.net
 1169 Aspen Street Phone: 303-439-0381
 Broomfield, Co. 80020 Fax: 303-438-8681